

ANNUAL REPORT 2025-2026



SAGE
FOUNDATION

<https://sagefoundation.in>

*Building coexistence
between People & Wildlife*

About SAGE Foundation

Stripes and Green Earth Foundation (SAGE Foundation) is a non-profit organization dedicated to wildlife conservation, habitat protection, ecological sustainability, and community-led conservation.

The Foundation works extensively in human-elephant conflict landscapes through scientific monitoring, field interventions, community engagement, environmental education, and biodiversity research.

SAGE Foundation believes that local communities are the true custodians of forests and biodiversity. By integrating science-based conservation approaches with grassroots participation, the organization aims to build resilient ecosystems and sustainable livelihoods.

Mission Statement

To conserve wildlife and natural ecosystems through science-based interventions, community engagement, capacity building, and sustainable coexistence initiatives while supporting vulnerable communities through ecological resilience and environmental awareness.

Vision Statement

To create a sustainable future where wildlife thrives alongside human communities, biodiversity is protected, and ecological harmony is strengthened through collaborative conservation action.

Operational Landscapes

SAGE Foundation has expanded its work across multiple ecological landscapes including:

- Gadchiroli, Gondia, Kolhapur & Sawantwadi – Maharashtra
- Barbil & Keonjhar – Odisha
- Kagaznagar – Telangana
- Sanjay Dubri Tiger Reserve & Anuppur – Madhya Pradesh
- Sundarbans & South Bengal – West Bengal



Executive Summary



Dear Friends, Partners, and Supporters,

Stripes and Green Earth Foundation (SAGE Foundation) continued its mission of wildlife conservation, biodiversity protection, and human-elephant conflict mitigation during FY 2025–26. The Foundation expanded its operations across Maharashtra, Odisha, Telangana, Madhya Pradesh, and West Bengal through strategic collaborations with forest departments, CSR partners, academic institutions, and local communities.

During the year, SAGE Foundation implemented multiple field-based interventions including elephant movement monitoring, early warning systems, solar fencing, awareness campaigns, anti-depredation squads, biodiversity assessments, and habitat studies.

The Foundation also strengthened grassroots participation through environmental education programmes, regional-language awareness materials, and village-level conservation initiatives.

The organization recorded steady financial growth, achieving a turnover of approximately Rs. 74 Lakhs in FY 2025–26.

Together, we can continue building a future where bio-diversity flourishes, ecosystems remain resilient, and humans and wildlife coexist in harmony.

With sincere appreciation,

Handwritten signature of Seema Sengupta in black ink.

Seema Sengupta

Director

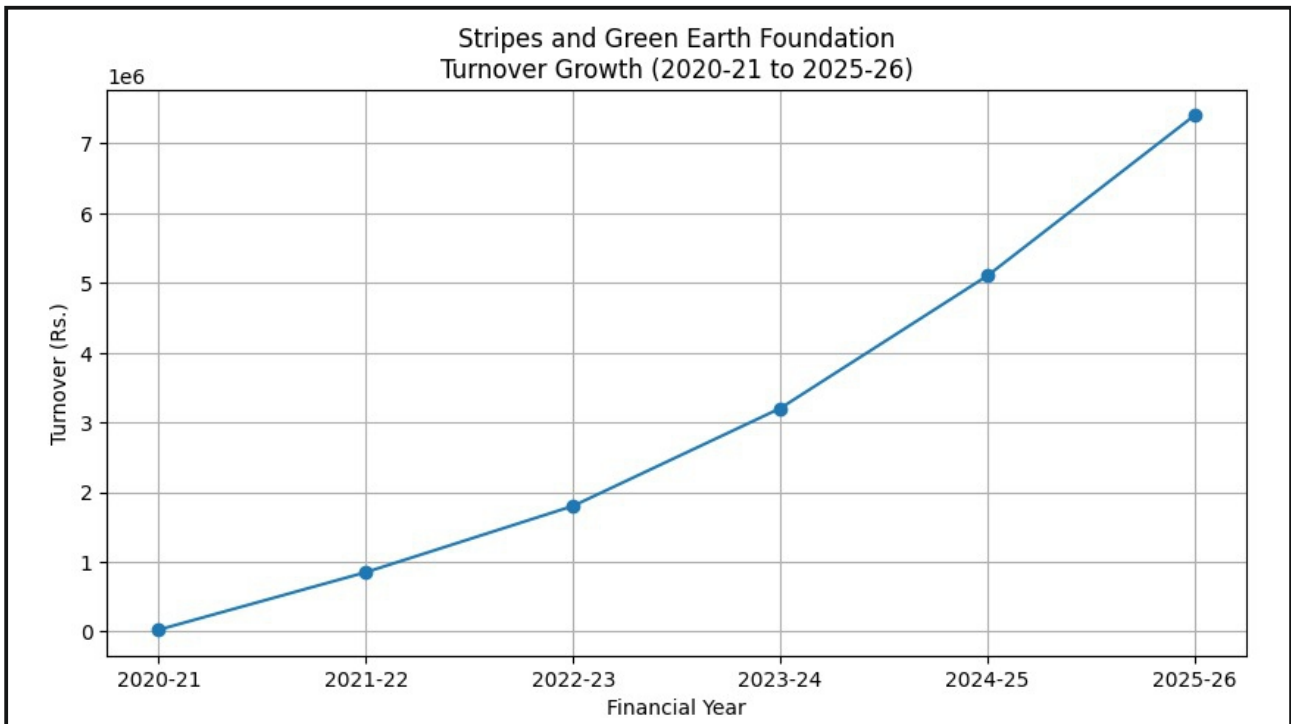
Handwritten signature of Sagnik Sengupta in black ink.

Sagnik Sengupta

Director

Stripes and Green Earth Foundation (SAGE Foundation)

Financial Growth up to 2026



The financial growth graph of STRIPES AND GREEN EARTH FOUNDATION reflects the organization's steady expansion and strengthening operational capacity over the last six financial years. Beginning with modest operations in FY 2020–21, the Foundation has demonstrated consistent year-on-year growth, achieving a turnover of Rs. 74 Lakhs in FY 2025–26.

This upward trajectory highlights the increasing trust and collaboration established with communities, institutions, CSR partners, and stakeholders in the fields of wildlife conservation, biodiversity assessment, habitat analysis, and sustainable environmental initiatives. The growth also signifies the Foundation's enhanced capability to implement larger and more impactful projects across multiple regions.

The financial progress achieved during the year reinforces the Foundation's commitment towards transparency, sustainability, and long-term ecological and community-driven conservation efforts.



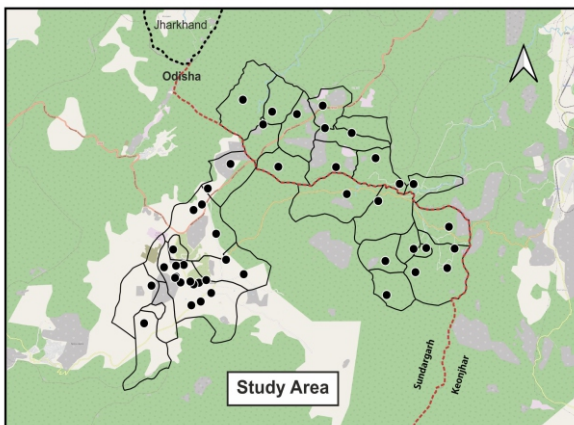
Activities 2025-2026

Stripes and Green Earth Foundation (SAGE Foundation) has been actively involved in monitoring elephant movements in Gadchiroli, Maharashtra, a region witnessing recent and unplanned elephant incursions. Leveraging field-based tracking, community inputs, and data analysis, SAGE has played a key role in documenting the migratory routes and behavioral patterns of these elephants, particularly lone tuskers. The foundation works closely with local communities and forest officials to enable early warning systems, reduce conflict, and advocate for a long-term conservation strategy in this emerging elephant landscape.



Activities 2025-2026

Stripes and Green Earth Foundation (SAGE Foundation) is implementing a dedicated **human-elephant conflict mitigation project “ Co-existence with Giants' in Barbil, Odisha**, since 2024 supported by the **JSW Foundation**. This initiative focuses on reducing conflict in high-risk villages through community engagement, elephant movement monitoring, and the deployment of early warning systems. By combining scientific tracking with grassroots participation, SAGE Foundation aims to build coexistence strategies that protect both human lives and elephant corridors, while fostering local stewardship for long-term conservation impact.



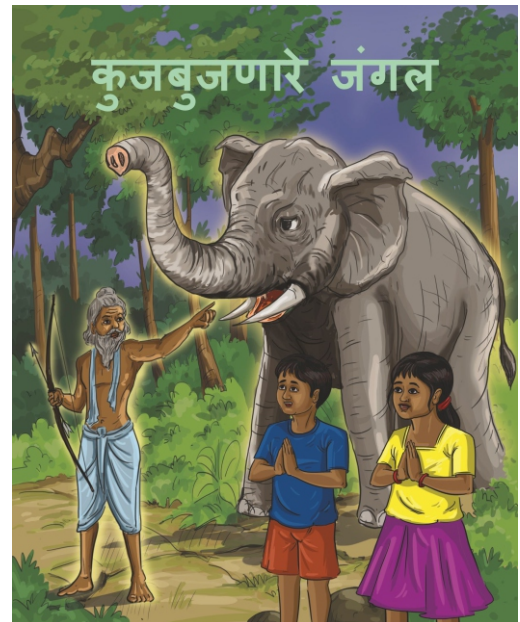
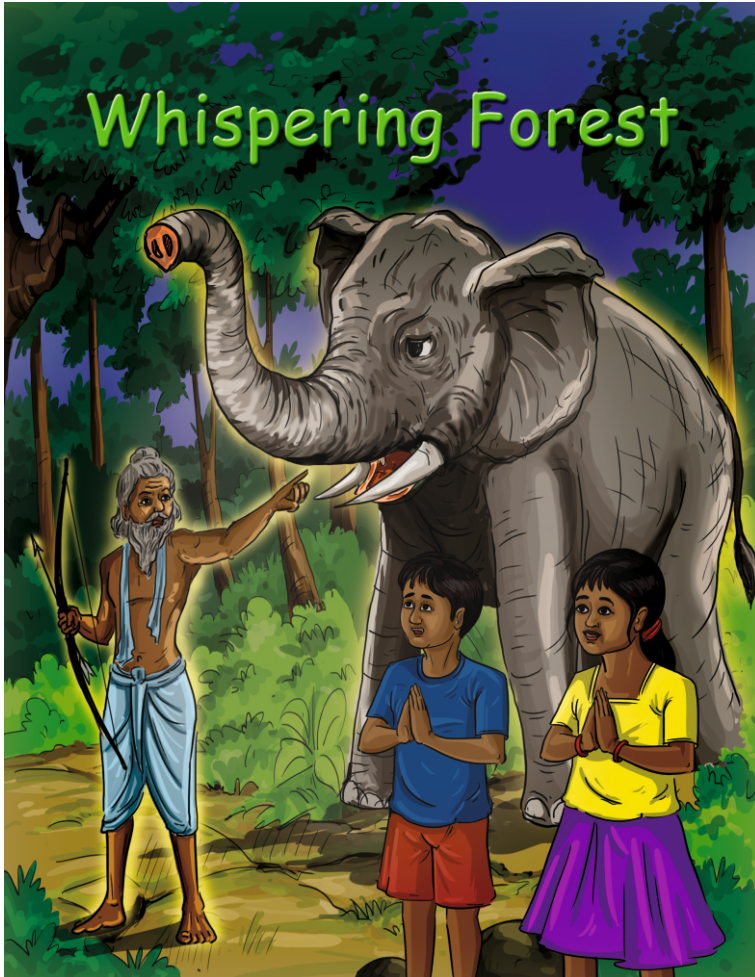
Activities 2025-2026

Stripes and Green Earth Foundation (SAGE Foundation) is implementing a dedicated human-elephant conflict mitigation project **“Conservation and management action plan of newly settled residential population of Asian Elephant in Gadchiroli Forest Circle, Maharashtra India through community participation”** since 2025 supported by the **Upadhyaya Foundation**. This initiative focuses on reducing conflict in high-risk villages through community engagement, elephant movement monitoring. By combining scientific tracking with grassroots participation, SAGE Foundation aims to build coexistence strategies that protect both human lives and elephant corridors, while fostering local stewardship for long-term conservation impact.



Key Activities and Achievements 2025-2026

In addition to various printed awareness materials, **Stripes and Green Earth Foundation (SAGE Foundation)** has published a comic book in each project area in the regional languages to create a mindset among school children to protect and co-exist with forest, animal and wildlife.



Key Activities & Achievements 2025–26

Human-Elephant Conflict Mitigation

- Conducted elephant movement monitoring in emerging conflict landscapes.
- Installed early warning systems in vulnerable villages.
- Supported rapid response and anti-depredation teams.
- Facilitated community preparedness initiatives.

Ecological Monitoring & Research

- Conducted biodiversity assessments and habitat analysis.
- Documented migratory patterns of conflict-prone tuskers.
- Supported GIS-based ecological monitoring and data collection.

Community Engagement

- Organized awareness programmes in schools and villages.
- Conducted focal group discussions with forest-fringe communities.
- Published conservation comic books in regional languages.
- Strengthened village-level coexistence initiatives.

Capacity Building

- Trained primary response teams and volunteers.
- Conducted workshops for forest personnel and youth groups.
- Strengthened local conservation leadership.



Major Achievements

- Successfully tracked and documented movement patterns of conflict-prone tuskless elephants across state boundaries.
- Conducted over 50 community awareness sessions impacting 2,000+ individuals in high-conflict zones.
- Supported rapid response units in conflict mitigation, reducing crop and human casualties in identified hotspots.
- Partnered with academic institutions and government bodies for ecological data sharing and conservation strategy development.
- Launched "Voices from the Fringe" – a field-based storytelling initiative amplifying local perspectives in conservation.



Challenges Faced

- Limited institutional funding and short-term project cycles hinder long-term conservation continuity.
- Gaps in coordination among state forest departments in managing transboundary wildlife movement.
- Climate variability and habitat fragmentation continue to intensify human-wildlife conflicts.
- Socio-economic distress in rural areas adds complexity to conservation dialogues and priorities.



Future Direction

SAGE is focused on scaling its work across landscapes by:

- Establishing regional field bases for consistent monitoring and response.
- Developing a central data hub for real-time Elephant movement tracking.
- Deepening community partnerships through eco-development and skill-building programs.
- Advocating for landscape-level conservation strategies in state and national policy frameworks.
- Expanding our volunteer network to nurture the next generation of conservation leaders.



IMPACT

20000+ Beneficiaries
including Odisha & Maharashtra



200+ Victims got
interim relief packages

45+ Solar Street Lights
Installed in different villages



50+ Machans
Installed in different villages

2000+ Rechargeable Torches
distributed among different villagers



30Km Solar Fence
Installed in different crop fields

60+ Awareness Programmes
conducted in different villages and schools



20+ Primary Response Team
prepared and trained in different villages

5000+ Tree Plantation
carried out in different villages



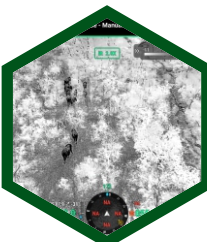
80+ Early Warning Devices
Installed in different villages

10+ Capacity Building Workshops
conducted in different forest divisions



15+ Anti-depredation Squads
prepared and trained in different villages

24x7 Monitoring
of wild elephant herds



100+ Focal Group Discussion (FGD)
carried out in different villages

Acknowledgements

The leadership of Stripes and Green Earth Foundation extends heartfelt gratitude to all our **donors, partners, volunteers, and dedicated team members**. Your unwavering support, trust, and collaboration have been the driving force behind every step we take in the field of conservation. Whether it is through funding, on-ground efforts, or shared vision, each contribution has helped us move closer to a future where humans and wildlife coexist in harmony. Thank you for being an integral part of this journey.



JSW Foundation



Odisha Forest
Department



Maharashtra Forest
Department



Upadhyaya Foundation

All Local Community Networks | All Academic & Conservation Institutions



STRIPES AND GREEN EARTH FOUNDATION

Reg Office: Prantik Apartment, VIP Road, Raghunathpur, D.B.Nagar, Kolkata-700059.

CIN : U85300WB2020NPL238666 | **UID:** WB/2020/0262533

Email: info@sagefoundation.in / sagnik@sagefoundation.in

Mobile: +91 8777091834 / +91 9007224932

Visit us: <http://sagefoundation.in>

Registration details:

CIN - U85300WB2020NPL238666

Date of Incorporation: 5th August 2020

PAN – AB ECS1255R

CSR-1- CSR00012500

NGO Darpan- WB/2020/0262533

12A - AB ECS1255R24KL01

80G - AB ECS1255RF20219